

Bessbrook Road, Aigburth, L17



For Sale - £270,000 Offers in Excess of

Key Features

- 3 Bedroom 1 Bathroom Terraced House
- EPC Rating: E
- Extremely Well Presented & Maintained
- Full of Character and Bursting with Original Period Features - Bay Windows to Living Room & Master Bedroom
- Two Spacious Reception Rooms with Large Windows
- Contemporary Kitchen with Integrated Appliances
- Utility Room with Plentiful Storage Space
- Three Spacious Bedrooms
- Contemporary Modern Bathroom with Bath & Shower
- Fully Boarded Loft Storage Room
- Beautiful, Well-Presented Family Home in Highly Sought After L17 Aigburth Road - Close to a Wealth of Amenities, Popular Schools and Good Public Transport Links
- Walking Distance to Otterspool Promenade, Sefton Park, Rose Lane and Aigburth Road

Further Details

- Tenure: Freehold
- No. of Floors: 2
- Floor Space: 95 square metres / 1,024 square feet
- Council Tax Band: B
- Local Authority: Liverpool City Council
- Parking: On Street
- Outside Space: Back Yard
- Heating/Energy: Gas Central Heating, Double Glazing
- Appliances/White Goods: Electric Oven, Electric Hob (Induction), Microwave, Fridge, Dishwasher

Description

Welcome to your new haven on Bessbrook Road, Aigburth, L17, brought to you by the esteemed Atlas Estate Agents. Nestled in one of Aigburth's most desirable neighborhoods, this terraced house offers a harmonious blend of timeless elegance and modern convenience.

Step inside to discover a meticulously maintained property where every detail has been thoughtfully curated. The accommodation is spread across two inviting floors, beginning with two spacious reception rooms adorned with large windows that flood the space with natural light. Picture yourself unwinding in these welcoming spaces, each brimming with character and boasting original period features, including charming bay windows that grace the living room and master bedroom.

Prepare culinary delights in the contemporary kitchen, equipped with integrated appliances and ample storage. Adjacent, a convenient utility room offers even more storage space, ensuring clutter remains out of sight. Upstairs, three generously sized bedrooms await, promising peaceful retreats for the whole family. The contemporary modern bathroom beckons with its luxurious amenities, featuring both a bath and shower for ultimate relaxation.

For those seeking additional storage, the fully boarded loft storage room provides the perfect solution. Outside, this beautiful family home is surrounded by a wealth of amenities, popular schools, and excellent public transport links. Enjoy leisurely strolls to Otterspool Promenade, Sefton Park, Rose Lane, and Aigburth Road, each just a stone's throw away.

Don't miss the opportunity to make this exquisite property your own - schedule a viewing today and experience the epitome of Aigburth living.

Additional Images



Bedroom 2



Courtyard Garden



Stairway/Hallway



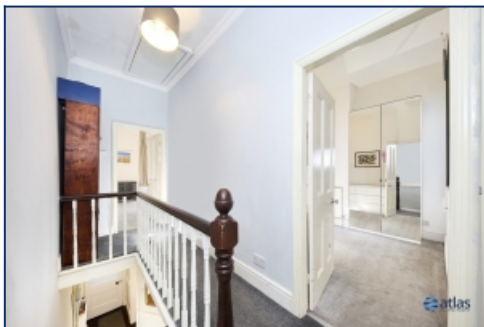
Back Reception Room



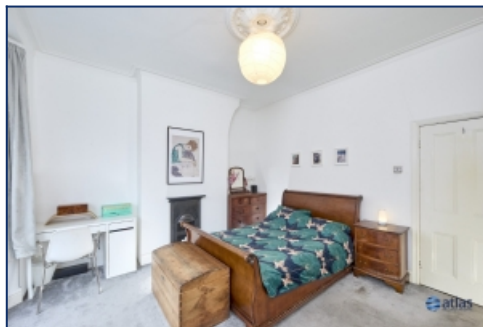
Kitchen



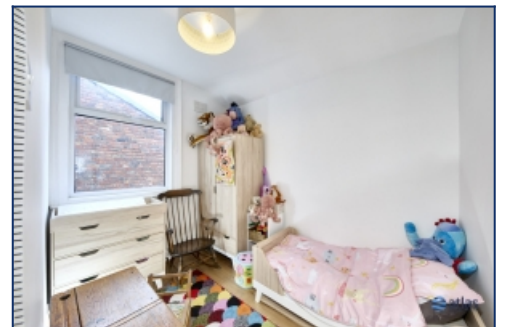
Utility Room



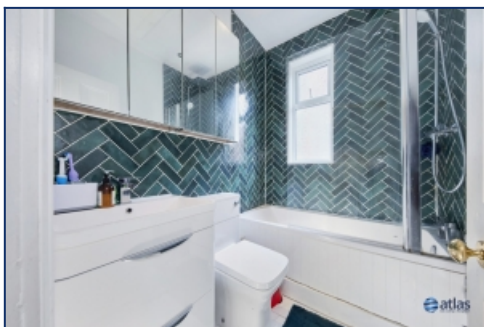
Landing



Bedroom 1



Bedroom 3

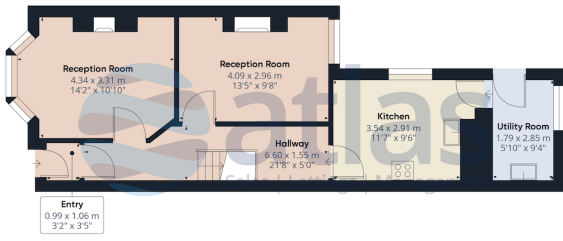


Bathroom



Courtyard Garden

Floor Plans



Ground Floor

Approximate total area⁽¹⁾
95.14 m²
1024.11 ft²

(1) Excluding balconies and terraces

While every attempt has been made to ensure accuracy, all measurements and approximations, not to scale. This floor plan is for illustrative purposes only.
G5MFF1360



Floor 1

Tel: 0151 727 2469
Fax: 0151 727 4943

Atlas Estate Agents, 2 Allerton Road,
Mossley Hill, Liverpool, L18 1LN

Email: sales@atlasestateagents.co.uk
Website: www.atlasestateagents.co.uk

These particulars are intended to give a fair and substantially correct overall description for the guidance of intending purchasers/tenants and do not constitute an offer or part of a contract. Please note that any services, heating systems or appliances have not been tested and no warranty can be given or implied as to their working order. Prospective purchasers/tenants ought to seek their own professional advice.

All descriptions, dimensions, areas, references to condition and necessary permissions for use and occupation and other details are given in good faith and are believed to be correct, but any intending purchasers/tenants should not rely on them as statements or representations of fact, but must satisfy themselves by inspection or otherwise as to the correctness of each of them.