

Rainbow Drive, Halewood, L26



For Sale - £150,000 Offers Over

Key Features

- 2 Bedroom 1 Bathroom Terraced House
- EPC Rating: Pending
- No Onward Chain for a Hassle-free Purchase
- Bright and Spacious Lounge Featuring French Doors That Open Directly to the Garden
- Contemporary Kitchen, Fully Equipped with a Gas Hob, Electric Oven, and Ample Storage
- Additional Storage Conveniently Located Under the Stairs
- Two Generous Double Bedrooms, One with Fitted Storage Cupboards
- Stylish, Modern Bathroom, Fully Tiled, with a Bath and Overhead Shower
- Well-proportioned Rear Garden, Perfect for Outdoor Relaxation
- Driveway Offering Off-street Parking for Added Convenience
- Double Glazing and Gas Central Heating Throughout for Energy Efficiency
- Prime Location, Just a 15-minute Walk to Halewood Shopping Centre and Close to Excellent Local Amenities

Further Details

- Tenure: Freehold
- No. of Floors: 2
- Floor Space: 555 square feet / 52 square metres
- Council Tax Band: A
- Local Authority: Knowsley Metropolitan Borough Council
- Parking: Off Street, Driveway
- Outside Space: Back Garden
- Heating/Energy: Gas Central Heating, Double Glazing
- Appliances/White Goods: Electric Oven, Gas Hob

Description

Atlas Estate Agents are delighted to present this charming two-bedroom terraced house for sale on Rainbow Drive, Halewood, L26.

Offering a perfect blend of comfort and convenience, this inviting home is an excellent opportunity for first-time buyers or those looking to downsize. With no onward chain, the purchase process is made easy and stress-free.

Accommodation is thoughtfully arranged over two floors. The bright and spacious reception room, complete with French doors leading out to a well-proportioned rear garden, invites natural light to fill the space—ideal for both relaxation and entertaining. The contemporary kitchen comes fully equipped with a gas hob, electric oven, and plenty of storage space, making it a practical and stylish heart of the home. Additional storage can be found under the stairs, offering even more space to keep your belongings neatly tucked away.

Upstairs, you will find two generous double bedrooms, one of which benefits from fitted storage cupboards. The stylish, fully tiled bathroom features a modern suite, complete with a bath and an overhead shower, perfect for unwinding after a long day.

Outside, the rear garden is a peaceful retreat, ideal for outdoor dining, gardening, or simply enjoying the fresh air. The property also includes a driveway, offering the convenience of off-street parking.

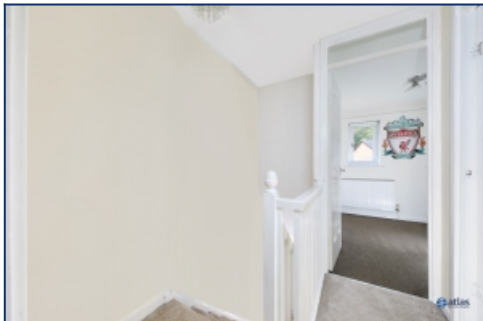
With double glazing and gas central heating throughout, this home ensures energy efficiency year-round. Its location is equally impressive—just a 15-minute walk to Halewood Shopping Centre and surrounded by excellent local amenities.

This delightful home is not to be missed. Contact Atlas Estate Agents today to arrange your viewing!

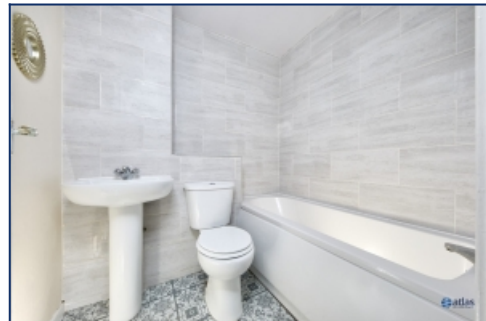
Additional Images



Living Room



Landing



Bathroom



Bedroom



Bedroom



Bedroom

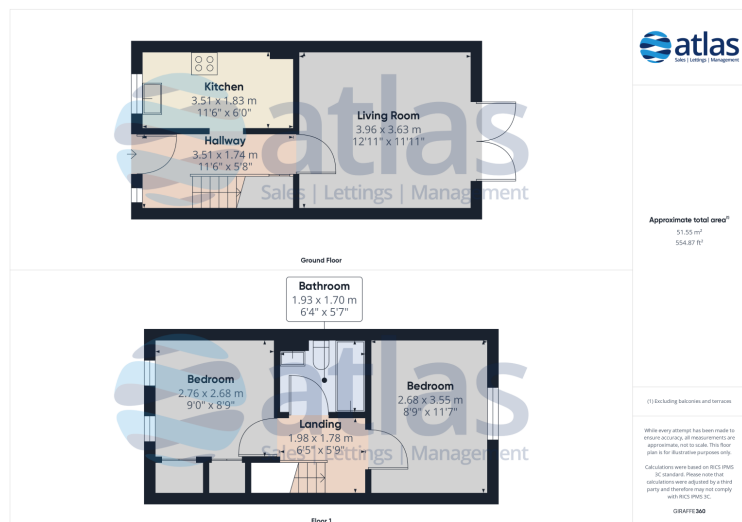


Garden



Garden

Floor Plans



These particulars are intended to give a fair and substantially correct overall description for the guidance of intending purchasers/tenants and do not constitute an offer or part of a contract. Please note that any services, heating systems or appliances have not been tested and no warranty can be given or implied as to their working order. Prospective purchasers/tenants ought to seek their own professional advice.

All descriptions, dimensions, areas, references to condition and necessary permissions for use and occupation and other details are given in good faith and are believed to be correct, but any intending purchasers/tenants should not rely on them as statements or representations of fact, but must satisfy themselves by inspection or otherwise as to the correctness of each of them.