

Russell Road, Garston, L19



For Sale - £200,000 Offers Over

Key Features

- 4 Bedroom 2 Bathroom Terraced House
- EPC Rating: B
- Well Presented & Maintained Throughout
- Spacious Reception Room with Patio Doors to Rear
- Contemporary Kitchen with Appliances Included
- Convenient Contemporary Downstairs W.C
- Four Bright and Airy Bedrooms - Loft Bedroom with En-suite Bathroom
- Large Fully Tiled Bathroom with Bath and Shower
- Private Off-Road Car Park
- Close to Local Green Spaces - Minutes Walk to Garston Park
- Amongst Excellent Amenities - 4 Minute Drive to New Mersey Retail Park
- Fantastic Sought After Location, L19

Further Details

- Tenure: Freehold
- No. of Floors: 3
- Floor Space: 100 square metres / 1,080 square feet
- Council Tax Band: B
- Local Authority: Liverpool City Council
- Parking: Off Street, Driveway, Allocated
- Outside Space: Back Garden
- Heating/Energy: Gas Central Heating, Double Glazing
- Appliances/White Goods: Electric Oven, Gas Hob, Freezer, Washing Machine, Dishwasher

Description

Welcome to Russell Road, Garston, L19 - where Atlas Estate Agents proudly present this stunning terraced house for sale, offering a blend of modern convenience and classic charm.

Step into this beautifully maintained property, where every detail speaks of quality and comfort. The accommodation spans three floors, offering ample space for families or professionals alike.

As you enter, you're greeted by a contemporary kitchen, complete with appliances, perfect for whipping up culinary delights. The adjacent spacious reception room beckons you to unwind, with patio doors leading to a private outdoor oasis, ideal for al fresco dining or morning coffees in the sunshine.

Upstairs, discover four bright and airy bedrooms, providing peaceful retreats for restful nights. A large fully tiled bathroom awaits, featuring both a bath and shower, ensuring relaxation is always within reach. The loft bedroom also boasts an en-suite bathroom, adding a touch of luxury to your daily routine.

Convenience is key in this home, with a contemporary downstairs W.C. and private off-road car park for hassle-free living. And for those who enjoy the

outdoors, Garston Park is just minutes away, offering green spaces for leisurely strolls or picnics with loved ones.

Situated in the sought-after L19 area, this property is surrounded by excellent amenities, including the nearby New Mersey Retail Park, perfect for shopping excursions or catching up with friends over a meal.

Don't miss the opportunity to make this fantastic property your own. Contact Atlas Estate Agents today to arrange a viewing and start envisioning your future in this wonderful home.

Additional Images



Family Bathroom



Garden



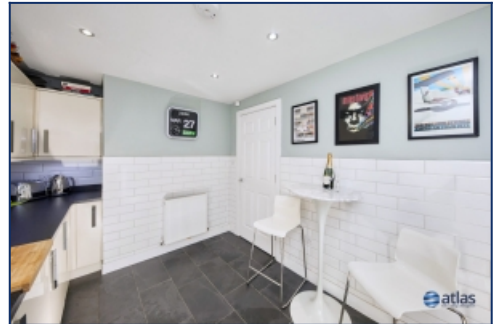
Entrance



Stairs



Reception Room



Kitchen



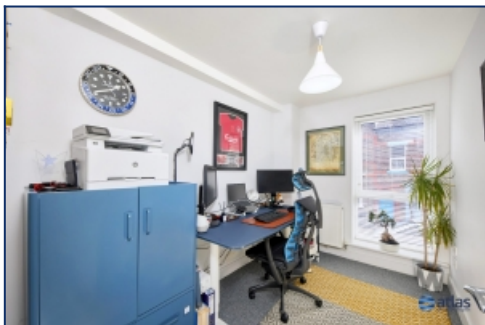
Downstairs W.c



Landing



Bedroom 1



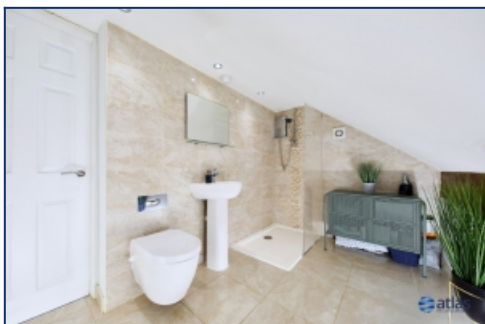
Bedroom 2



Bedroom 3



Loft Bedroom



Loft Bedroom En Suite

Floor Plans



Tel: 0151 727 2469
Fax: 0151 727 4943

Atlas Estate Agents, 2 Allerton Road,
Mossley Hill, Liverpool, L18 1LN

Email: sales@atlasestateagents.co.uk
Website: www.atlasestateagents.co.uk

These particulars are intended to give a fair and substantially correct overall description for the guidance of intending purchasers/tenants and do not constitute an offer or part of a contract. Please note that any services, heating systems or appliances have not been tested and no warranty can be given or implied as to their working order. Prospective purchasers/tenants ought to seek their own professional advice.

All descriptions, dimensions, areas, references to condition and necessary permissions for use and occupation and other details are given in good faith and are believed to be correct, but any intending purchasers/tenants should not rely on them as statements or representations of fact, but must satisfy themselves by inspection or otherwise as to the correctness of each of them.