

## Ullet Road, Aigburth, L8



**For Sale - £700,000**

### Key Features

- 6 Bedroom 6 Bathroom Detached House
- EPC Rating: E
- No Onward Chain
- Superb Opportunity for Both Owner-occupiers and Developers
- Currently Arranged as Six Self-contained Flats
- Sympathetically Converted, Retaining Many Original Character Features
- Set on a Generous Plot with Mature Rear Gardens
- Full-height Basement Offering Considerable Potential
- Off-street Parking with Garage Integrated Into the Basement
- A Rare Opportunity to Acquire a Truly Unique Property
- Highly Sought-after South Liverpool Location
- Well-connected with Excellent Transport Links

### Further Details

- Tenure: Freehold
- No. of Floors: 4
- Floor Space: 6,340 square feet / 589 square metres
- Council Tax Band: A
- Local Authority: Liverpool City Council
- Parking: Off Street, Garage, Driveway
- Outside Space: Patio/Decking, Back Garden

### Description

Brought to the market by Atlas Estate Agents, this detached property on Ullet Road, Aigburth, presents a rare and unique opportunity for owner-occupiers and developers alike. Spanning four floors, this substantial residence is currently arranged as six self-contained flats, providing significant potential for a range of uses. While the property requires major renovation, it still retains a wealth of original character features, offering the chance to create a truly magnificent home or investment.

The accommodation is generously proportioned, with a total of six bedrooms, six bathrooms, a kitchen, and four reception rooms, allowing for versatile living spaces throughout. A full-height basement further enhances the possibilities, providing additional room to expand, create recreational areas, or even restore to its former grandeur.

Set on a large plot with mature gardens to the rear, the property benefits from off-street parking and an integrated garage, a rarity in such a prime location. With no onward chain, this is an exceptional opportunity to acquire a unique property in one of South Liverpool's most sought-after areas, known for its characterful homes and strong community. Ullet Road is perfectly positioned to take advantage of excellent transport links, making it well-connected to the city centre and beyond.



This is a chance to bring your vision to life and shape a landmark home in an area rich with history and charm.

Additional Images



Room



Entrance



Entrance



Room



Bathroom/Room



Room



Room



Room



Room



Room



Room



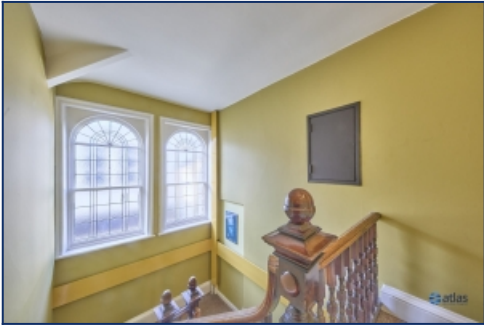
Room



Room



Room



Room

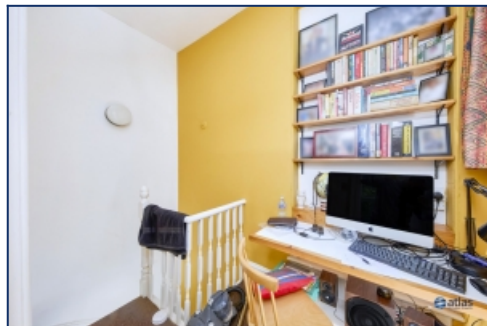




Kitchen/Room



Room



Room



Room



Kitchen/Room



Garden

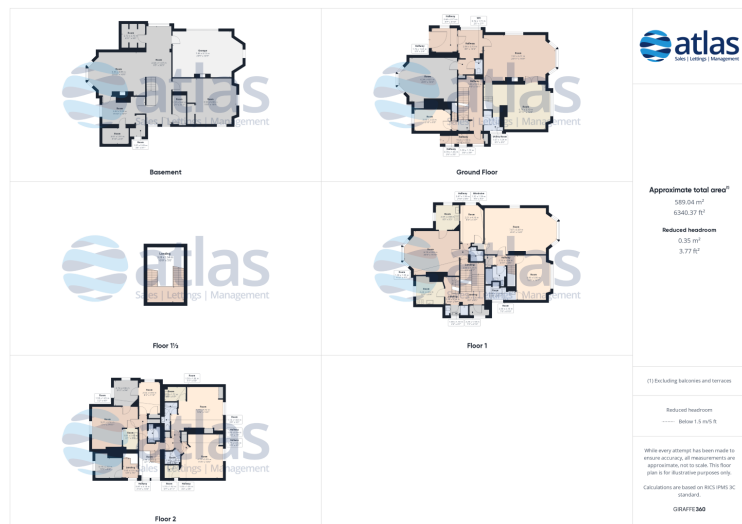


Garden



Garden

## Floor Plans



Tel: 0151 727 2469  
Fax: 0151 727 4943

Atlas Estate Agents, 2 Allerton Road,  
Mossley Hill, Liverpool, L18 1LN

Email: [sales@atlasestateagents.co.uk](mailto:sales@atlasestateagents.co.uk)  
Website: [www.atlasestateagents.co.uk](http://www.atlasestateagents.co.uk)

These particulars are intended to give a fair and substantially correct overall description for the guidance of intending purchasers/tenants and do not constitute an offer or part of a contract. Please note that any services, heating systems or appliances have not been tested and no warranty can be given or implied as to their working order. Prospective purchasers/tenants ought to seek their own professional advice.

All descriptions, dimensions, areas, references to condition and necessary permissions for use and occupation and other details are given in good faith and are believed to be correct, but any intending purchasers/tenants should not rely on them as statements or representations of fact, but must satisfy themselves by inspection or otherwise as to the correctness of each of them.