

## Lakenheath Road, Halewood, L26



## For Sale - £140,000 Offers Over

### Key Features

- 3 Bedroom 1 Bathroom Terraced House
- EPC Rating: C
- No Onward Chain
- Spacious and Bright Reception Room
- Open Plan Fitted Kitchen
- Additional Kitchen Storage Area
- Downstairs Storage Room
- Three Bright and Airy Bedrooms
- Modern Fully Tiled Shower Room
- Large Extremely Well Maintained Rear Garden
- Close to Excellent Transport Links and Local Green Spaces - Minutes to Halewood Park Triangle and Easy Motorway Access
- Lovely Family Home in L26 - Amongst Excellent Amenities - 10 Minute Walk to Halewood Shopping Centre

### Further Details

- Tenure: Freehold
- No. of Floors: 2
- Floor Space: 79 square metres / 855 square feet
- Council Tax Band: A
- Local Authority: Knowsley Metropolitan Borough Council
- Parking: Off Street, Driveway
- Outside Space: Back Garden
- Heating/Energy: Gas Central Heating, Double Glazing
- Appliances/White Goods: Electric Cooker

### Description

Step into the epitome of comfortable living with this inviting terraced house, proudly brought to the market by Atlas Estate Agents. Nestled in the heart of Halewood on Lakenheath Road, L26, this home is now available for sale with the added benefit of no onward chain.

Upon entering, you are greeted by a spacious and bright reception room, bathed in natural light. The open-plan fitted kitchen includes a thoughtfully designed additional storage area, ensuring ample space for all your culinary needs. Adjacent to the kitchen, a convenient downstairs storage room provides extra utility, keeping your home neat and organised.

The accommodation is thoughtfully arranged over two floors, with three bright and airy bedrooms on the upper level. Each bedroom offers a serene retreat, perfect for restful nights and rejuvenating mornings. The modern, fully tiled shower room provides a stylish and practical space for your daily routines.

One of the standout features of this property is the large, extremely well-maintained rear garden. An oasis of greenery, it offers an idyllic setting for outdoor activities, gardening, or simply unwinding in the fresh air.

Located in the vibrant community of Halewood, this home boasts excellent transport links and proximity to local green spaces, with Halewood Park Triangle just minutes away. The convenience of easy motorway access ensures effortless commuting, while the nearby Halewood Shopping Centre, a mere 10-minute walk, caters to all your shopping needs.



This lovely family home in L26 is surrounded by excellent amenities, making it a perfect choice for those seeking a harmonious blend of convenience, comfort, and community. Don't miss the opportunity to make this charming house your new home. Contact Atlas Estate Agents today to arrange a viewing and experience the exceptional lifestyle this property has to offer.

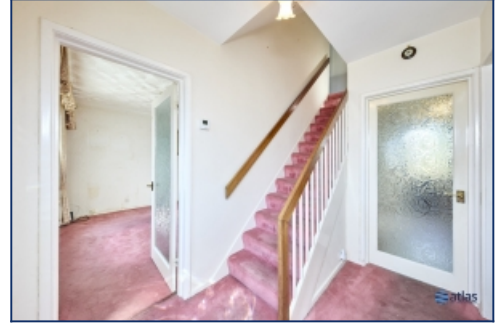
## Additional Images



Bedroom 2



Garden



Stairs



Reception Room



Kitchen



Storage Room



Landing



Bedroom 3



Bathroom



Toilet



Back

## Floor Plans



---

Tel: 0151 727 2469  
Fax: 0151 727 4943

Atlas Estate Agents, 2 Allerton Road,  
Mossley Hill, Liverpool, L18 1LN

Email: [sales@atlasestateagents.co.uk](mailto:sales@atlasestateagents.co.uk)  
Website: [www.atlasestateagents.co.uk](http://www.atlasestateagents.co.uk)

These particulars are intended to give a fair and substantially correct overall description for the guidance of intending purchasers/tenants and do not constitute an offer or part of a contract. Please note that any services, heating systems or appliances have not been tested and no warranty can be given or implied as to their working order. Prospective purchasers/tenants ought to seek their own professional advice.

All descriptions, dimensions, areas, references to condition and necessary permissions for use and occupation and other details are given in good faith and are believed to be correct, but any intending purchasers/tenants should not rely on them as statements or representations of fact, but must satisfy themselves by inspection or otherwise as to the correctness of each of them.