

Lyttelton Road, Aigburth, L17



For Sale - £325,000 Offers Over

Key Features

- 4 Bedroom 2 Bathroom Terraced House
- EPC Rating: D
- Tiled Entrance Hallway with Built-In Door Mat
- Beautiful, Traditional Features Retained Throughout Including Ceiling Roses and Coving
- Gorgeous Front Reception Room with Hardwood, Herringbone Floors and Bay Window Shutters
- Convenient and Sleek Under Stairs Storage
- Open Plan Kitchen Diner with French Doors to Rear Yard
- Contemporary Kitchen with Granite Worktops
- Four Well-Appointed Bedrooms - Immaculately Presented
- Spacious, Modern Family Bathroom with Slipper Bath
- Wonderful Loft Bedroom with Ensuite Bathroom Facilities
- South-West Facing, Sunny Rear Yard

Further Details

- Tenure: Freehold
- No. of Floors: 3
- Floor Space: 115 square metres / 1,240 square feet
- Council Tax Band: B
- Local Authority: Liverpool City Council
- Parking: On Street
- Outside Space: Back Yard
- Heating/Energy: Gas Central Heating, Double Glazing
- Appliances/White Goods: Gas Cooker, Gas Hob

Description

Nestled on the picturesque Lyttelton Road in the desirable Aigburth L17, this exquisite terraced house, now available for sale through Atlas Estate Agents, embodies the perfect blend of traditional charm and contemporary elegance.

Upon entering, the tiled hallway sets the tone for the home's meticulous attention to detail. The residence boasts two inviting reception rooms, where the front reception room is a standout feature with its stunning hardwood herringbone floors and classic bay window shutters. Traditional features such as ceiling roses and coving are thoughtfully retained throughout, adding a touch of timeless sophistication.

The heart of the home is the open-plan kitchen diner. Here, sleek French doors lead to a sun-drenched, south-west facing rear yard, perfect for al fresco dining or relaxing in the sun. The contemporary kitchen is a chef's dream, complete with luxurious granite worktops and ample space for culinary creativity.

Accommodation is generously spread over three floors, offering flexibility and space for a growing family. The property includes four well-appointed bedrooms, each immaculately presented. The spacious, modern family bathroom on the first floor is a true retreat, featuring a sumptuous slipper bath ideal for unwinding after a long day.

The crowning jewel of this home is the wonderful loft bedroom. This serene sanctuary comes complete with en-suite bathroom facilities, providing a private and peaceful haven.

Practicality is not overlooked, with convenient and sleek under stairs storage ensuring every inch of space is optimised.

This terraced house on Lyttelton Road is not just a place to live, but a place to thrive, combining modern amenities with the elegance of traditional design. Arrange a viewing today with Atlas Estate Agents and discover the unique charm of this exceptional property.

Additional Images



Bedroom 1



Back Yard



Kitchen



Kitchen / Diner



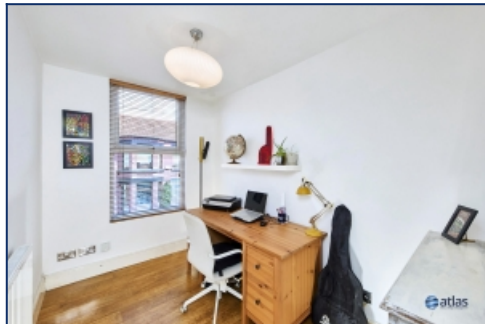
Kitchen / Diner



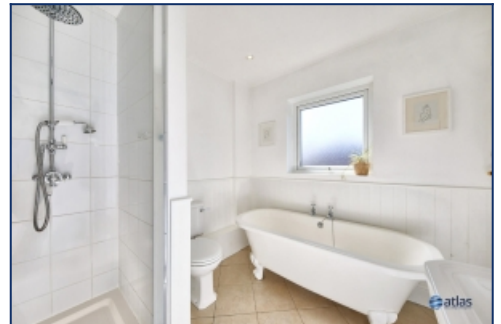
Landing



Bedroom 2



Bedroom 3



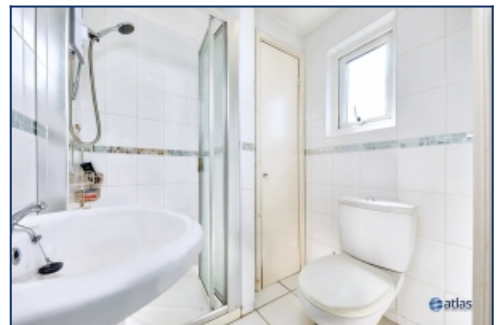
Bathroom



Bedroom 4 (loft)



Bedroom 4 (loft)



Loft En Suite Bathroom



Back Yard

Floor Plans



Tel: 0151 727 2469
Fax: 0151 727 4943

Atlas Estate Agents, 2 Allerton Road,
Mossley Hill, Liverpool, L18 1LN

Email: sales@atlasestateagents.co.uk
Website: www.atlasestateagents.co.uk

These particulars are intended to give a fair and substantially correct overall description for the guidance of intending purchasers/tenants and do not constitute an offer or part of a contract. Please note that any services, heating systems or appliances have not been tested and no warranty can be given or implied as to their working order. Prospective purchasers/tenants ought to seek their own professional advice.

All descriptions, dimensions, areas, references to condition and necessary permissions for use and occupation and other details are given in good faith and are believed to be correct, but any intending purchasers/tenants should not rely on them as statements or representations of fact, but must satisfy themselves by inspection or otherwise as to the correctness of each of them.