

Crowther Road, Roby, L14



For Sale - £400,000 Offers Over

Key Features

- 4 Bedroom 2 Bathroom Detached House
- EPC Rating: B
- No Onward Chain
- Spacious & Bright Front Reception Room
- Open Plan Kitchen/Dining Room with Patio Doors to Rear and Floor to Ceiling Bi-Fold Shutters
- Convenient Downstairs W.C
- Four Modern and Spacious Bedrooms - Master Bedroom Contains En Suite Bathroom
- Contemporary Family Bathroom with Bath & Overhead Shower
- Extremely Well Manicured Landscaped Rear Garden
- Detached Private Garage Adjacent to House
- Located in a Quiet Close, Adjacent to Green Space
- Beautifully Presented Family Home in Desirable L14 Location - Close to Great Schools, Transport Links and Local Green Spaces - Minutes to Court Hey Park

Further Details

- Tenure: Freehold
- No. of Floors: 2
- Floor Space: 102 square metres / 1,101 square feet
- Council Tax Band: D
- Local Authority: Knowsley Metropolitan Borough Council
- Parking: Off Street, Garage
- Outside Space: Front Garden, Back Garden
- Heating/Energy: Gas Central Heating, Double Glazing
- Appliances/White Goods: Electric Oven (Double), Gas Hob, Fridge, Freezer, Washing Machine, Dishwasher

Description

Nestled within the serene embrace of Crowther Road, Roby, L14, this enchanting abode stands proudly, awaiting its next custodian. Presented to you by the esteemed Atlas Estate Agents, this detached haven beckons with a promise of tranquil living and boundless possibilities.

Step through the threshold into a realm of modern elegance, where light dances freely through expansive windows, illuminating each corner of the abode. The heart of the home, a kitchen brimming with warmth and possibility, invites culinary adventures and cherished family gatherings. Adjoining this culinary haven, discover an additional inviting reception room, offering its own sanctuary for relaxation and entertainment. A convenient downstairs W.C completes the ground floor.

Ascend the staircase to unveil a haven of comfort and serenity. Four spacious bedrooms await, offering retreats for rejuvenation and dreams. The master suite, a sanctuary unto itself, boasts an en-suite bathroom, ensuring indulgence and convenience.

For moments of relaxation and rejuvenation, discover the contemporary family bathroom, complete with a luxurious bath and overhead shower. Outside, a meticulously landscaped garden awaits, a verdant oasis offering respite from the world.

Convenience meets luxury with the addition of a detached private garage adjacent to the house, ensuring ample space for storage and shelter. Situated in a quiet close adjacent to green spaces, this residence embodies the essence of peaceful suburban living.

Located in the coveted L14 locale, this beautifully presented family home is within arm's reach of esteemed schools, convenient transport links, and verdant parks. Court Hey Park, a mere stone's throw away, invites exploration and adventure.

Embrace the opportunity to call this captivating sanctuary your own—a haven where cherished memories await and dreams take flight. Welcome home to Crowther Road.

Additional Images



En Suite



Garden



Hallway



Downstairs Bathroom



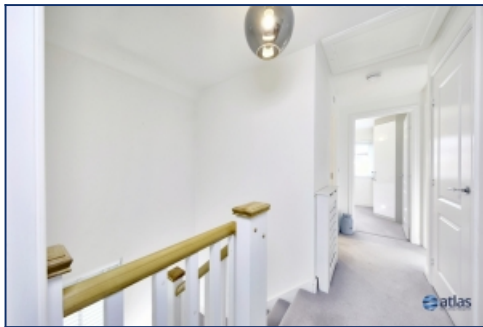
Main Reception Room



Main Reception Room



Main Reception Room



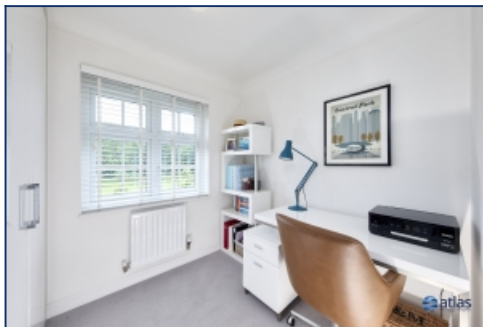
Landing



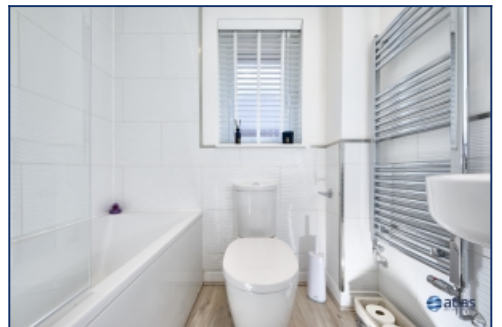
Bedroom 2



Bedroom 3



Bedroom 4



Bathroom



Bathroom



Back

Floor Plans



Tel: 0151 727 2469
Fax: 0151 727 4943

Atlas Estate Agents, 2 Allerton Road,
Mossley Hill, Liverpool, L18 1LN

Email: sales@atlasestateagents.co.uk
Website: www.atlasestateagents.co.uk

These particulars are intended to give a fair and substantially correct overall description for the guidance of intending purchasers/tenants and do not constitute an offer or part of a contract. Please note that any services, heating systems or appliances have not been tested and no warranty can be given or implied as to their working order. Prospective purchasers/tenants ought to seek their own professional advice.

All descriptions, dimensions, areas, references to condition and necessary permissions for use and occupation and other details are given in good faith and are believed to be correct, but any intending purchasers/tenants should not rely on them as statements or representations of fact, but must satisfy themselves by inspection or otherwise as to the correctness of each of them.