

## Chesterton Street, Garston, L19



**For Sale - £140,000**

### Key Features

- 3 Bedroom 1 Bathroom Terraced House
- EPC Rating: C
- No Onward Chain
- Extremely Well Presented - Recently Refurbished
- Spacious Open Plan Kitchen/Living Room
- Contemporary Recently Decorated Kitchen
- Large Family Bathroom with Bath and Shower
- Three Modern and Well Decorated Bedrooms
- Private Gated Courtyard
- Close to a Wealth of Amenities, Popular Schools and Local Green Spaces
- Excellent Transport Links - 5 Minute Drive to Both Liverpool John Lennon Airport and South Parkway Train Station
- Tenants in Situ Until October 2024

### Description

Step into the epitome of contemporary comfort with this stunning terraced house on Chesterton Street, Garston, L19, brought to you by Atlas Estate Agents. Boasting a prime location and an array of desirable features, this property is a true gem waiting to be discovered.

Upon entering, you'll be greeted by a spacious open-plan kitchen and living room, ideal for entertaining guests or relaxing with family. Recently refurbished to the highest standards, the kitchen exudes modern elegance with its sleek design and top-of-the-line appliances, making cooking a joyous experience.

The large family bathroom offers both a bath and a shower, ensuring convenience and luxury for all.

Venture upstairs to discover three beautifully appointed bedrooms, each exuding warmth and style, providing the perfect retreat after a long day.

Outside, a private gated courtyard awaits, offering a tranquil space to unwind or enjoy al fresco dining on warm summer evenings.

### Further Details

- Tenure: Freehold
- No. of Floors: 2
- Floor Space: 79 square metres / 847 square feet
- Council Tax Band: A
- Local Authority: Liverpool City Council
- Parking: On Street
- Outside Space: Back Yard
- Heating/Energy: Double Glazing
- Appliances/White Goods: Electric Oven, Gas Hob

### Rental Information

- Current Rent: £925 per calendar month
- Gross Yield (Based on Current Rent): 7.9%
- Tenancy Start Date: 01/04/34
- Tenancy Fixed Term: 6 months

Conveniently situated close to a wealth of amenities, popular schools, and local green spaces, this property caters to every lifestyle need. Plus, with excellent transport links, including a 5-minute drive to both Liverpool John Lennon Airport and South Parkway Train Station, commuting couldn't be easier.

With tenants in situ until October 2024, this property presents a fantastic investment opportunity with no onward chain, making it a must-see for savvy buyers seeking both comfort and convenience. Don't miss out on the chance to make this your dream home - schedule your viewing today!

## Additional Images



Bedroom One



Bedroom Two



Hallway



Kitchen



Dining Room



Landing



Bedroom Three



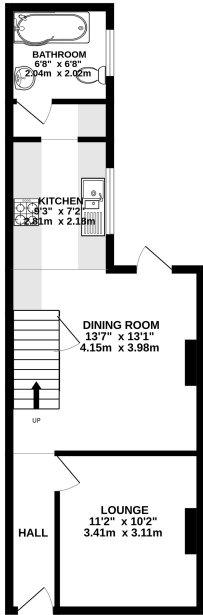
Bedroom Three



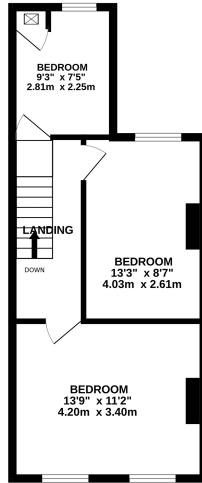
Rear Yard

## Floor Plans

GROUND FLOOR  
458 sq. ft. (42.5 sq. m.) approx.



1ST FLOOR  
389 sq. ft. (36.2 sq. m.) approx.



TOTAL FLOOR AREA: 847 sq. ft. (78.7 sq. m.) approx.

While every attempt has been made to ensure the accuracy of the floorplans contained herein, measurements of floors, walls, doors and any other items are approximate and no responsibility is taken for any error, omission or mis-statement. This plan is for illustrative purposes only and should be used as such by any prospective purchaser. The accuracy, precision and quality of the plan have not been tested and no guarantee, as to their accuracy or efficiency can be given.  
Made with Metropac CAD3



Tel: 0151 727 2469  
Fax: 0151 727 4943

Atlas Estate Agents, 2 Allerton Road,  
Mossley Hill, Liverpool, L18 1LN

Email: [sales@atlasestateagents.co.uk](mailto:sales@atlasestateagents.co.uk)  
Website: [www.atlasestateagents.co.uk](http://www.atlasestateagents.co.uk)

These particulars are intended to give a fair and substantially correct overall description for the guidance of intending purchasers/tenants and do not constitute an offer or part of a contract. Please note that any services, heating systems or appliances have not been tested and no warranty can be given or implied as to their working order. Prospective purchasers/tenants ought to seek their own professional advice.

All descriptions, dimensions, areas, references to condition and necessary permissions for use and occupation and other details are given in good faith and are believed to be correct, but any intending purchasers/tenants should not rely on them as statements or representations of fact, but must satisfy themselves by inspection or otherwise as to the correctness of each of them.