

Molesworth Grove, Childwall, L16



For Sale - £240,000 Offers Over

Key Features

- 3 Bedroom 1 Bathroom Terraced House
- EPC Rating: E
- Spacious Open-Plan Living and Dining Area
- Elegant Lounge with a Large Bay Window and a Charming Feature Fireplace
- Stylish, Modern Kitchen Equipped with an Electric Cooker and Hob
- Ample Storage Space on the Landing
- Two Double Bedrooms, Including a Master with Bay Window, and a Versatile Third Bedroom Perfect for a Home Office or Child's Room
- Contemporary Bathroom with a Spacious Bath and Overhead Shower
- Wooden Blinds and Newly Fitted Carpets
- Cosy, Easy-to-Maintain Garden
- Double Glazing and Energy-Efficient Gas Central Heating
- Driveway with Parking for Two Cars

Further Details

- Tenure: Freehold
- No. of Floors: 2
- Floor Space: 746 square feet / 69 square metres
- Council Tax Band: B
- Local Authority: Liverpool City Council
- Parking: Driveway
- Outside Space: Front Garden, Back Garden
- Heating/Energy: Gas Central Heating, Double Glazing
- Appliances/White Goods: Electric Cooker, Electric Hob (Ceramic)

Description

Atlas Estate Agents Presents:
A Stunning Three-Bedroom Home in Childwall's Coveted Molesworth Grove

Nestled in the heart of the sought-after Childwall neighbourhood, this charming terraced house is a perfect blend of style, comfort, and practicality. Arranged over two spacious floors, it offers a warm and inviting atmosphere, making it an ideal haven for families, first-time buyers, or those looking to upsize.

As you step through the entrance, you are greeted by an elegant lounge, bathed in natural light from a large bay window and centred around a delightful feature fireplace—a cosy spot to unwind. The heart of the home lies in the expansive, open-plan living and dining area, seamlessly connecting to a stylish, modern kitchen. Fully equipped with an electric cooker and hob, this kitchen is designed for both functionality and flair, making meal prep a pleasure.

Upstairs, the landing offers ample storage space, leading to three thoughtfully designed bedrooms. The master bedroom is a sanctuary of tranquillity,

complete with a bay window that adds character and charm. A second double bedroom provides generous proportions, while the third room, versatile in its use, is perfectly suited for a home office, nursery, or guest room. The contemporary bathroom boasts a spacious bath with an overhead shower, offering a touch of luxury to your daily routine.

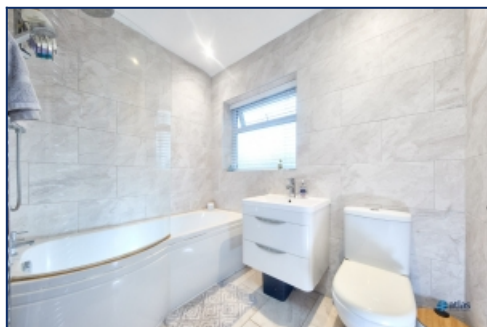
The home's exterior is equally impressive. A cosy, easy-to-maintain garden at the rear provides the perfect spot for relaxing or entertaining, while the driveway at the front offers parking for two cars—an invaluable feature in this popular area.

Additional highlights include double glazing, energy-efficient gas central heating, newly fitted carpets, and chic wooden blinds throughout, ensuring comfort and efficiency all year round.

Situated in the highly desirable L16 postcode, this property enjoys excellent local amenities, schools, and transport links. Don't miss the chance to make this exceptional home your own.

Arrange your viewing today with Atlas Estate Agents—a property that truly ticks all the boxes!

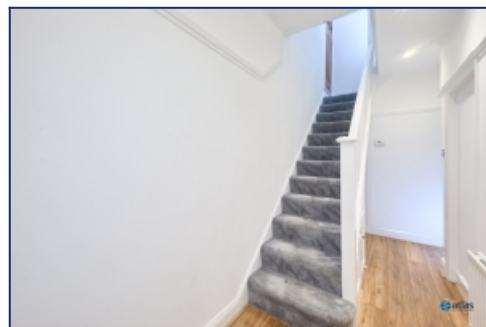
Additional Images



Bathroom



Garden



Hallway



Lounge



Dining Room



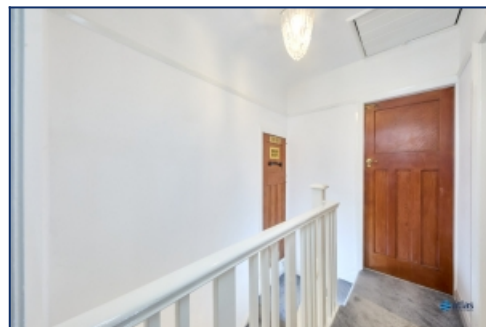
Dining Room



Kitchen



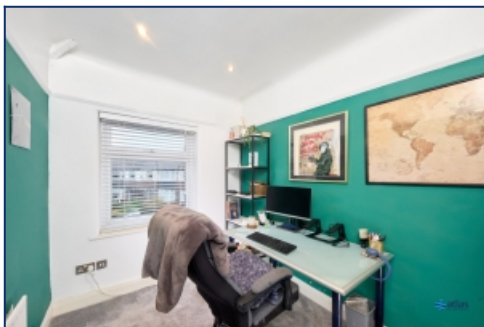
Kitchen



Landing



Bedroom



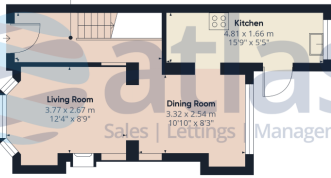
Bedroom



Garden

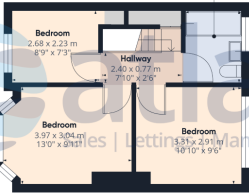
Floor Plans

Hallway
4.51 x 1.56 m
14'9" x 5'1"



Ground Floor

Bathroom
1.70 x 2.26 m
5'7" x 7'4"



Floor 1

Approximate total area**
69.27 m²
745.62 ft²

(*) Excluding balconies and terraces

**While every attempt has been made to ensure accuracy, all measurements are approximate and to guide. This floor plan is for illustrative purposes only.

Calculations are based on RICS IPMS 3C standard.

GRMFE360

Tel: 0151 727 2469
Fax: 0151 727 4943

Atlas Estate Agents, 2 Allerton Road,
Mossley Hill, Liverpool, L18 1LN

Email: sales@atlasestateagents.co.uk
Website: www.atlasestateagents.co.uk

These particulars are intended to give a fair and substantially correct overall description for the guidance of intending purchasers/tenants and do not constitute an offer or part of a contract. Please note that any services, heating systems or appliances have not been tested and no warranty can be given or implied as to their working order. Prospective purchasers/tenants ought to seek their own professional advice.

All descriptions, dimensions, areas, references to condition and necessary permissions for use and occupation and other details are given in good faith and are believed to be correct, but any intending purchasers/tenants should not rely on them as statements or representations of fact, but must satisfy themselves by inspection or otherwise as to the correctness of each of them.