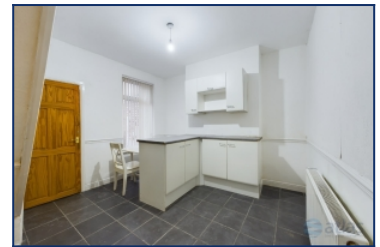


Bellmore Street, Garston, L19



To Let - £725 per calendar month

Key Features

- 2 Bedroom 1 Bathroom Terraced House
- EPC Rating: D
- Recently Decorated & New Carpets
- Served by Excellent Transport Links
- Modern Fitted Kitchen and Bathroom
- Available for Long Term
- Popular South Liverpool Location
- Ample Free on Street Car Parking
- Double Glazing & Gas Central Heating
- Local Shops and Amenities
- Rear Yard with Gated Access
- Early Viewing Advised!

Move-in Costs

- Security Deposit: £836.53
- To secure this property you are required to pay a holding deposit equal to one weeks rent, £167.31. The holding deposit will go on to form part of your rent/security deposit. The balance of any rent/security deposit is normally payable the working day before you move in.

Description

A WELL PRESENTED 2 BEDROOM TERRACE HOUSE SITUATED IN THE POPULAR SOUTH LIVERPOOL SUBURB OF GARSTON, L19.

Situated in Garston, a small yet popular south Liverpool suburb and home to many useful amenities including Liverpool South Parkway Train Station, Long Lane Sports Complex and a municipal library. Neighbouring suburb Speke, encompasses Liverpool John Lennon Airport, New Mersey Retail Park and Speke Hall. Speke Hall is a wood-framed wattle-and-daub Tudor manor house and is one of the finest surviving examples of its kind. St Mary's Road is a popular main road running through Garston and features a diverse selection of wine bars, coffee shops and independent businesses. Garston is also home to good

Further Details

- Furnishing: Unfurnished
- No. of Floors: 2
- Floor Space: 533 square feet / 50 square metres
- Council Tax Band: A
- Local Authority: Liverpool City Council
- Parking: On Street
- Outside Space: Back Yard
- Heating/Energy: Gas Central Heating, Double Glazing
- Appliances/White Goods: Electric Oven, Electric Hob (Ceramic), Washing Machine
- Bills Included: None

Letting Information

- Date Available From: Now
- Minimum Term: 12 months
- Minimum Annual Household Income: £21,750
- Guarantor NOT required (subject to referencing)
- Pets NOT considered
- Smoking NOT permitted

