

## Fitzgerald Road, Old Swan, L13



To Let - £900 per calendar month

### Key Features

- 3 Bedroom 1 Bathroom Terraced House
- EPC Rating: C69
- Recently Refurbished
- Modern Fitted Kitchen
- Contemporary Family Bathroom
- Served by Excellent Transport Links
- Local Shops and Amenities
- On Street Parking
- Double Glazing & Gas Central Heating
- Ideal Family Home
- Available for Long Term
- Back Yard with Gated Access

### Move-in Costs

- Security Deposit: £1,038.46
- To secure this property you are required to pay a holding deposit equal to one weeks rent, £207.69. The holding deposit will go on to form part of your rent/security deposit. The balance of any rent/security deposit is normally payable the working day before you move in.

### Description

The property briefly comprises of; entrance hallway, front living knocked through to rear dining room which is open plan to the kitchen. To the first floor are two double bedrooms, a single bedroom and a family bathroom. Externally, there is a back yard with gated access and on street parking.

This opportunity will not be on the market for long so contact us today to arrange your viewing!

### Further Details

- Furnishing: Unfurnished
- No. of Floors: 2
- Floor Space: 88 square metres / 947 square feet
- Council Tax Band: A
- Local Authority: Liverpool City Council
- Security: Burglar Alarm
- Parking: On Street
- Outside Space: Back Yard
- Heating/Energy: Gas Central Heating, Double Glazing
- Appliances/White Goods: Electric Oven, Electric Hob (Ceramic)
- Bills Included: None

### Letting Information

- Date Available From: Now
- Minimum Term: 12 months
- Minimum Annual Household Income: £27,000
- Guarantor NOT required (subject to referencing)
- Pets NOT considered
- Smoking NOT permitted

## Additional Images



Bathroom



Master Bedroom



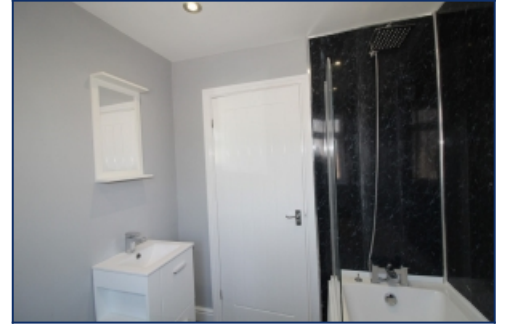
Bedroom 2



Kitchen/Diner



Bedroom 3



Bathroom



Rear Yard

Tel: 0151 727 2469  
Fax: 0151 727 4943

Atlas Estate Agents, 2 Allerton Road,  
Mossley Hill, Liverpool, L18 1LN

Email: [lettings@atlasestateagents.co.uk](mailto:lettings@atlasestateagents.co.uk)  
Website: [www.atlasestateagents.co.uk](http://www.atlasestateagents.co.uk)

These particulars are intended to give a fair and substantially correct overall description for the guidance of intending purchasers/tenants and do not constitute an offer or part of a contract. Please note that any services, heating systems or appliances have not been tested and no warranty can be given or implied as to their working order. Prospective purchasers/tenants ought to seek their own professional advice.

All descriptions, dimensions, areas, references to condition and necessary permissions for use and occupation and other details are given in good faith and are believed to be correct, but any intending purchasers/tenants should not rely on them as statements or representations of fact, but must satisfy themselves by inspection or otherwise as to the correctness of each of them.