

## Ronald Street, Old Swan, L13



To Let - £695 per calendar month

### Key Features

- 2 Bedroom 1 Bathroom Terraced House
- EPC Rating: C69
- Two Bedroom House
- Available Immediately
- Well Presented Throughout
- Popular Residential Area in Old Swan
- Modern Fitted Kitchen
- Modern Bathroom
- Excellent Transport Links
- Close to Local Amenities
- Gas Central Heating
- Available for Long Term

### Move-in Costs

- Security Deposit: £801.92
- To secure this property you are required to pay a holding deposit equal to one weeks rent, £160.38. The holding deposit will go on to form part of your rent/security deposit. The balance of any rent/security deposit is normally payable the working day before you move in.

### Description

A lovely two bedroom terraced house available immediately benefiting from a through lounge, modern kitchen and bathroom. Located in the highly popular residential area of Old Swan. This opportunity will not be on the market for long so contact us today to arrange your viewing!

### Further Details

- Furnishing: Unfurnished
- No. of Floors: 2
- Floor Space: 57 square metres / 614 square feet
- Council Tax Band: A
- Local Authority: Liverpool City Council
- Security: Burglar Alarm
- Parking: On Street
- Outside Space: Back Yard
- Heating/Energy: Gas Central Heating, Double Glazing
- Bills Included: None

### Letting Information

- Date Available From: Now
- Minimum Term: 12 months
- Minimum Annual Household Income: £20,850
- Guarantor NOT required (subject to referencing)
- Pets NOT considered
- Smoking NOT permitted

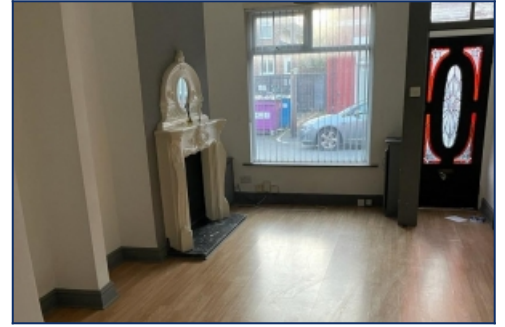
## Additional Images



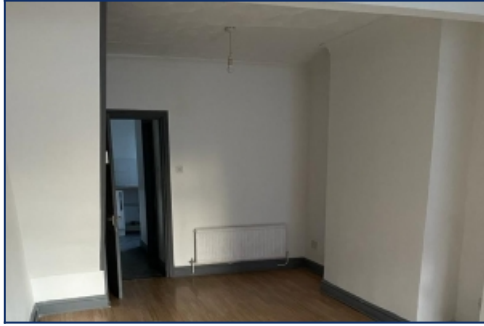
Bedroom



Front External



Lounge



Lounge



Lounge



Kitchen



Kitchen



Kitchen



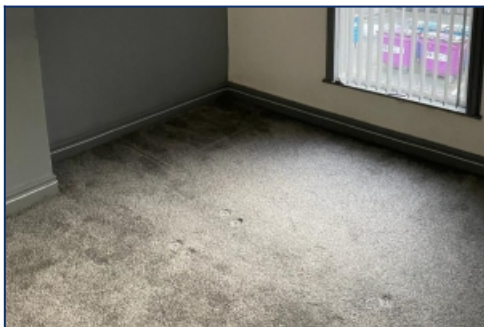
Bedroom



Bedroom



Bedroom



Bedroom

Tel: 0151 727 2469  
Fax: 0151 727 4943

Atlas Estate Agents, 2 Allerton Road,  
Mossley Hill, Liverpool, L18 1LN

Email: [lettings@atlasestateagents.co.uk](mailto:lettings@atlasestateagents.co.uk)  
Website: [www.atlasestateagents.co.uk](http://www.atlasestateagents.co.uk)

These particulars are intended to give a fair and substantially correct overall description for the guidance of intending purchasers/tenants and do not constitute an offer or part of a contract. Please note that any services, heating systems or appliances have not been tested and no warranty can be given or implied as to their working order. Prospective purchasers/tenants ought to seek their own professional advice.

All descriptions, dimensions, areas, references to condition and necessary permissions for use and occupation and other details are given in good faith and are believed to be correct, but any intending purchasers/tenants should not rely on them as statements or representations of fact, but must satisfy themselves by inspection or otherwise as to the correctness of each of them.